



User's manual

NAPPA
Leather & Aluminum 2.5" HDD Enclosure

A. Package Content

- "NAPPA" 2.5" HDD Enclosure
- USB 2.0 Y-cable
- eSATA cable (Model:EB210ES)
- Tool package (Screwdriver*1+Screw *3)
- User's manual
- Carry Bag

B. Minimum System Requirements

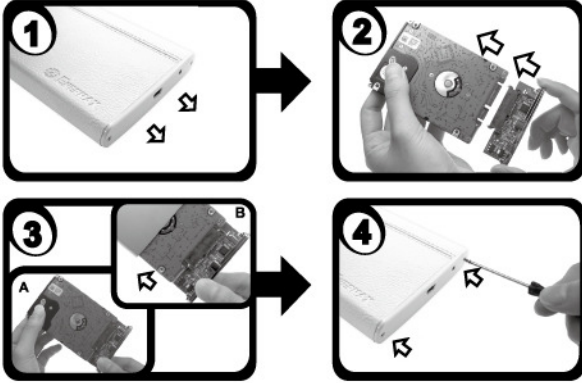
- Windows 98 SE / ME / 2000 / XP / Vista, and Windows 7
- Mac OS 9.x (Apple USB support 1.3.5 and greater) and Mac OS 10.1, 10.2, 10.3, and 10.4
- Computer with USB 2.0 or 1.1 interface, eSATA port (Model:EB210ES)
- PC : Intel Pentium 233MHz-compatible processor or greater
- Mac : G3 processor or greater
- Minimum 32MB RAM

C. LED Indicator

- Power : Green LED
- Access (Read/Write) : Green LED flash

D. Hardware Installation

1. Open the front panel.
2. Connect the SATA HDD to the SATA connectors on the PCBA.
3. A. Make sure it's tightly connected.
B. Slide it back.
4. Fasten the enclosure with screws enclosed.



E. Using your EB210S/EB210ES

Introduction

- Driver installation is not required when using Windows ME / 2000 / XP / Vista / 7
- When using Windows 98SE, please log on to www.enermax.com for drivers. Do not connect the enclosure to the computer until the driver is completely installed.
- Please make sure you format the HDD before the first time use.
- The eSATA interface does NOT supply power to device. So please make sure the USB cable is also connected when using eSATA.
- If your computer fail to detect the device when connecting eSATA, please try "Computer Management" – "Disk Management" – "Action" – "Rescan Disk" to find the device.
- The USB cable with two USB plugs is designed for efficient power supply. Generally you only need one USB connection to drive the external HD. Some desktops or laptops limit the power supply of the USB ports or some HDDs require more power. In those cases, you need to plug two USB plugs to get enough power supply.

F. Unplug Procedure

- Unplug Procedure on a PC (Microsoft Windows)*
 1. Click on the taskbar icon for the external hardware
 2. Choose the external HDD and confirm to remove it
- Unplug Procedure on a Macintosh (Apple Mac OS)*
 1. Drag the external HDD icon into the trash bin
 2. Turn off your device
- Unplug Procedure of eSATA

eSATA connection is not swappable only if motherboard supports this feature. Otherwise, we suggest you to unplug the connection after the power is off.

*For safe removal of your drive and assure no data is lost, always follow the unplug procedure. If not, errors message might show up.

© Copyright 2009 Enermax Technology Corporation. All Rights Reserved.

The information contained in this manual is believed to be accurate and reliable. Enermax Technology Corporation assumes no responsibility for any errors contained in this manual. Enermax Technology Corporation reserves the right to make changes in the specifications and/or design of this product without prior notice.

The diagrams contained in this manual may also not fully represent the product that you are using and are there for illustration purposes only.

All mentioned company and product names are trademarks or registered trademarks of their respectable owners.