



EB210S-B

NAPPA

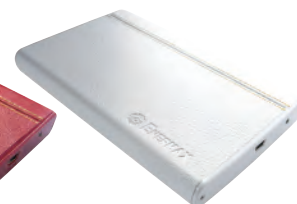
Leather & Aluminum 2.5" HDD Enclosure



EB210S-BN



EB210S-R



EB210S-W



Leather-binding technique (patented)



Stylish PU leather



Power & Access indicator



Screw driver included



Water resistant carry bag

Features

- Stylish leather-binding technique (patented) : provides a great touch and durability
- Aluminum structure : for maximum sturdiness
- Support USB 2.0 : for instant "Plug & Play"
- LED indicator : for power & access status
- Screw driver included : ready to use
- Water-resistant carry bag : for extra protection

Specifications

HDD Support	2.5" SATA I&II HDD
Interface	USB 2.0
Data Transfer Rate	480 Mb/sec max.
Case Material	PU Leather, Aluminum and Plastic
Power Source	USB Bus Power +5V
Support HDD	4500-7200RPM
Power & Access indicator	Green LED
Support OS	Windows 98SE / ME / 2000 / XP / Vista / 7 Mac OS 9.x or Higher
Dimensions (D * W * H)	128mm * 80mm * 14mm / 5.04" * 3.15" * 0.55"